

一、Preface

1.1 Purpose of this document

This manual is used to guide the user of Volvo DVR GEN II to use the matched APP Volvo On Road to setup the DVR accordingly.

1.2 Background

Volvo on Road is tailor-made developed by Peksunny (Beijing) Automotive Technology Company Limited to match with Volvo DVR GEN II via WIFI connection according to Volvo's requirement.

二、Usages

2.1 Main functions

There are several main functions for this APP: WIFI connection, realtime viewing and replay of the video, album management, setup the DCR, sharing to social media etc.

2.2 Performance

The system has stable performance which can meet user's requirements.

2.3 Safety and confidential

There is safety and confidential mechanism designed in the system. Each DVR has a pin code which is used to authorize the smart device to make the connection. At the same time, one DVR can connect to 3 smart devices via WIFI hotspot in DVR, one of which is the master user and the other two servant ones. The servant users can only do operations including real-time viewing and replay of video, manually taking photo, edit and download video and photo via APP. The master user, as the administrator of DVR can also setup the DVR, receiving the relevant video triggered by the "Camera" button on DVR, or G-sensor as well.

三、Working environment

3.1 Hardware

- Volvo DVR GEN II

- Smart phone or pad with Android system (Considering the smartphone technology changes rapidly, 8-core and 3G DDR above will ensure smooth user experience.

3.2 Software of smart device

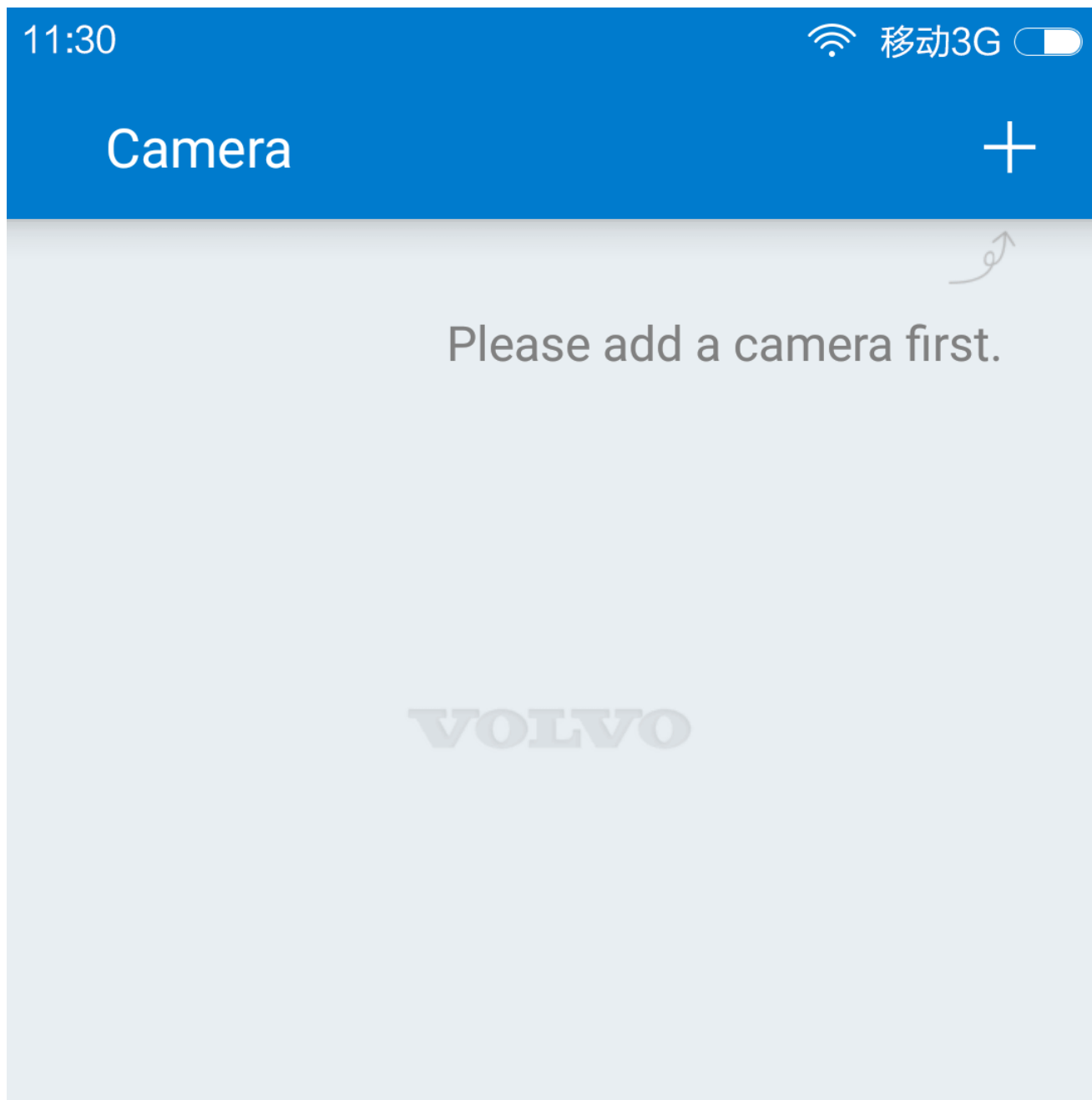
- Android 3.0 or above

四、Operations guidance

4.1 Introduction to the main objects in the user interface of APP

1 . WiFi connection

When entering into the main user interface of Volvo On Road, press "+" button, the smart device will automatically search the nearby Wifi hotspots, "VOLVO_M6" will be found and chosen and the initial pin code "1234567890" can be input and press "ADD" to make the connection.





Camera



Albums



Settings

Choose to connect to the hotspot named as "VOLVO_M6":

11:30

移动3G

< Camera nearby



VOLVO_M6



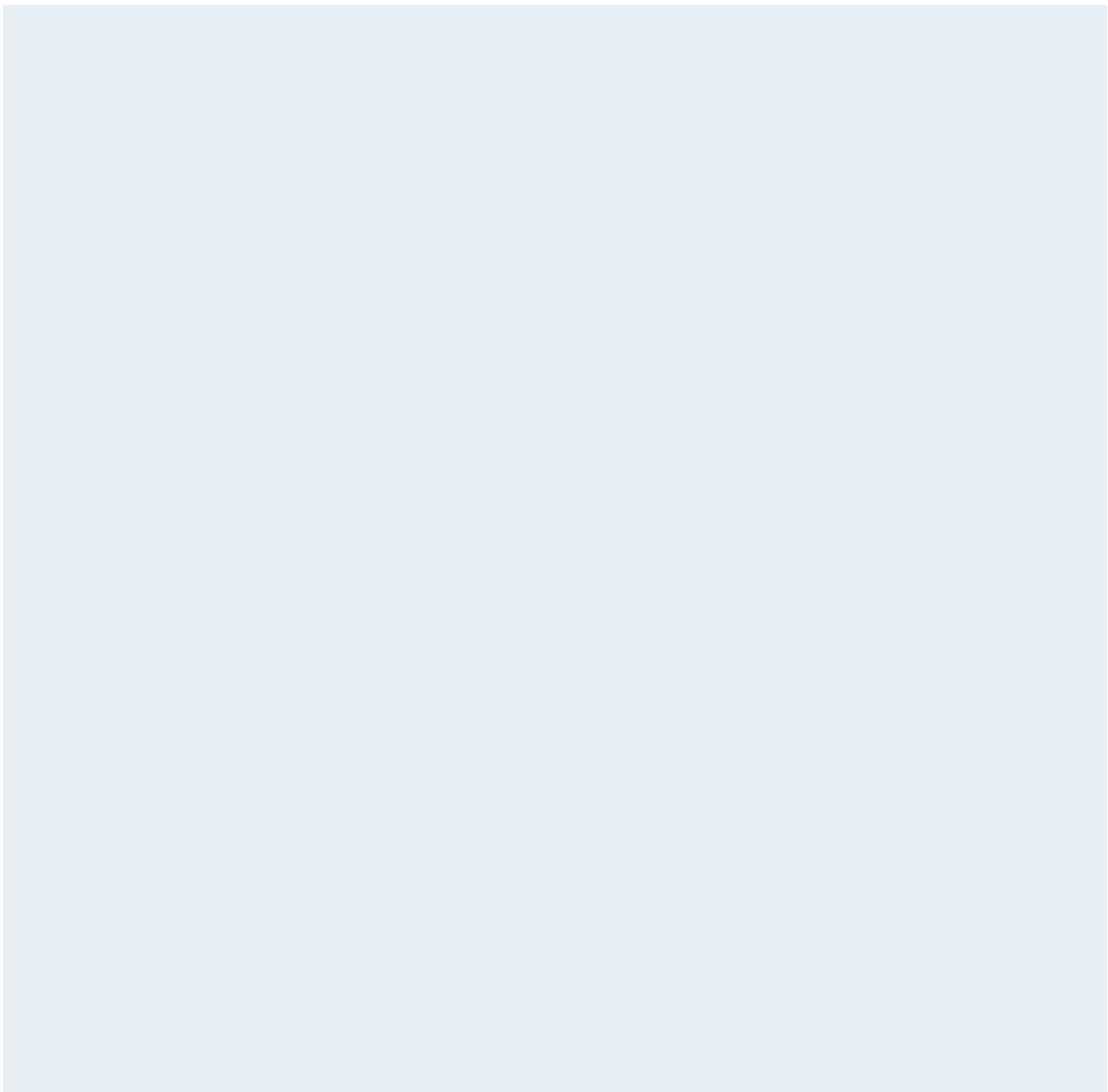
.....

Add



VOLVO_M6





Press "ADD" to add the smart device and make the connection.

2 . Real-time viewing and replay of the video

Once connection is made between smart device and DVR, APP will shift into real-time viewing interface. "Full screen" button can be pressed to shift into full screen real-time viewing mode, where moving the progress bar on the display to the left can precisely locate the time frame to replay the video. (Note: The video file being replayed is stored in the TF card in DVR, won't be downloaded to the smart device automatically). When the progress bar is moved to the right end, the interface will restore back to the real-time viewing mode.

And the system supports user to choose horizontal screen or vertical screen. The vertical screen is shown as below:





Volvo_M6



[Download file](#)





Camera



Albums



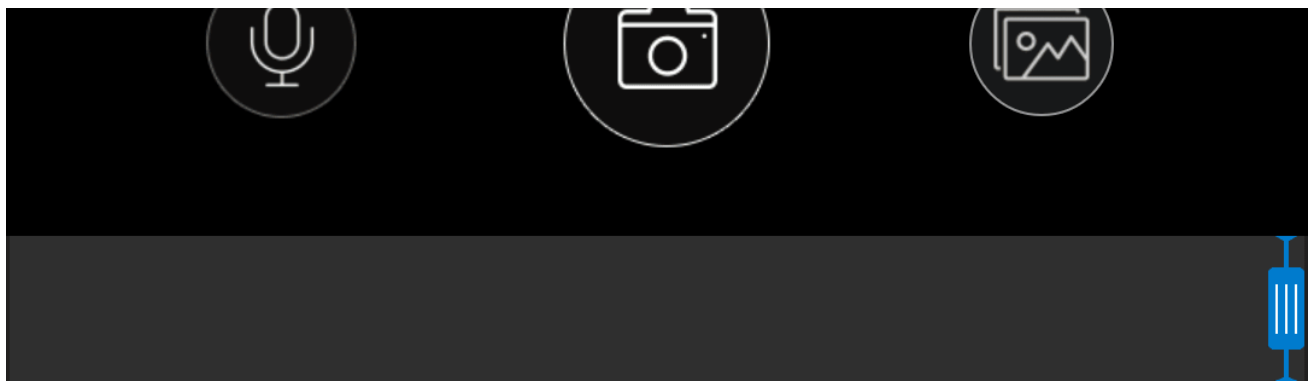
Settings



Preview

8/1 4:41 PM  96%





And the horizontal screen is shown as below:

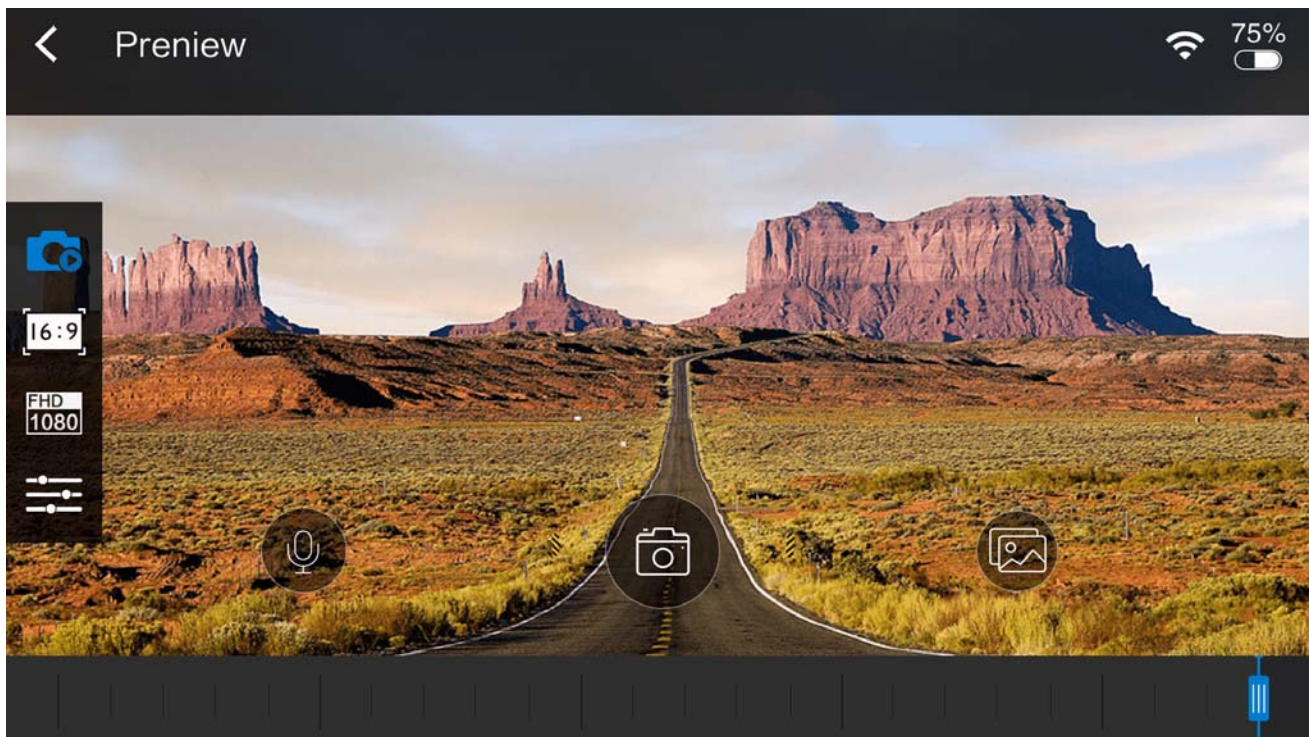

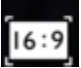




Illustration to icons on the real-time viewing interface:

 Choose whether to take the associated video (the "associate video" refers to a 10-second video, 5 seconds before and after the triggering time point, and once it is shot triggered by "camera" button on DVR or G-sensor, it will be automatically pushed to the master user of the smart device in connection, or as soon as the connection with the main user is made. The associated video will be saved in the album of APP in the master smart device.

 Choose the ratio of height and width of the display. (16:9 full screen mode or 24:10 wide screen mode)

 Choose the definition of the recorded video (1920×1080 full HD, 1280×720 HD , or 960×480 Standard Definition), and when in full screen real-time viewing mode, slipping the finger up and down on the left side of display can adjust the brightness of the screen.

 Press to take the current image on the screen and save to the album of APP.



Play or pause. (During replaying, can be used to watch the details of the video, especially for purpose of responsibility determining.)



Mute the microphone. (when choose mute, the recorded video has no audio, which can be used to protect privacy.) And when in full screen real-time viewing mode, slipping the finger un and down on the right side of screen can adjust the volume of media playing of the smart device.



Setup the camera

Note: when real-time viewing or replay, in full screen mode and all icons fade out, the user can user two fingers to zoom in and out the video to check the details.

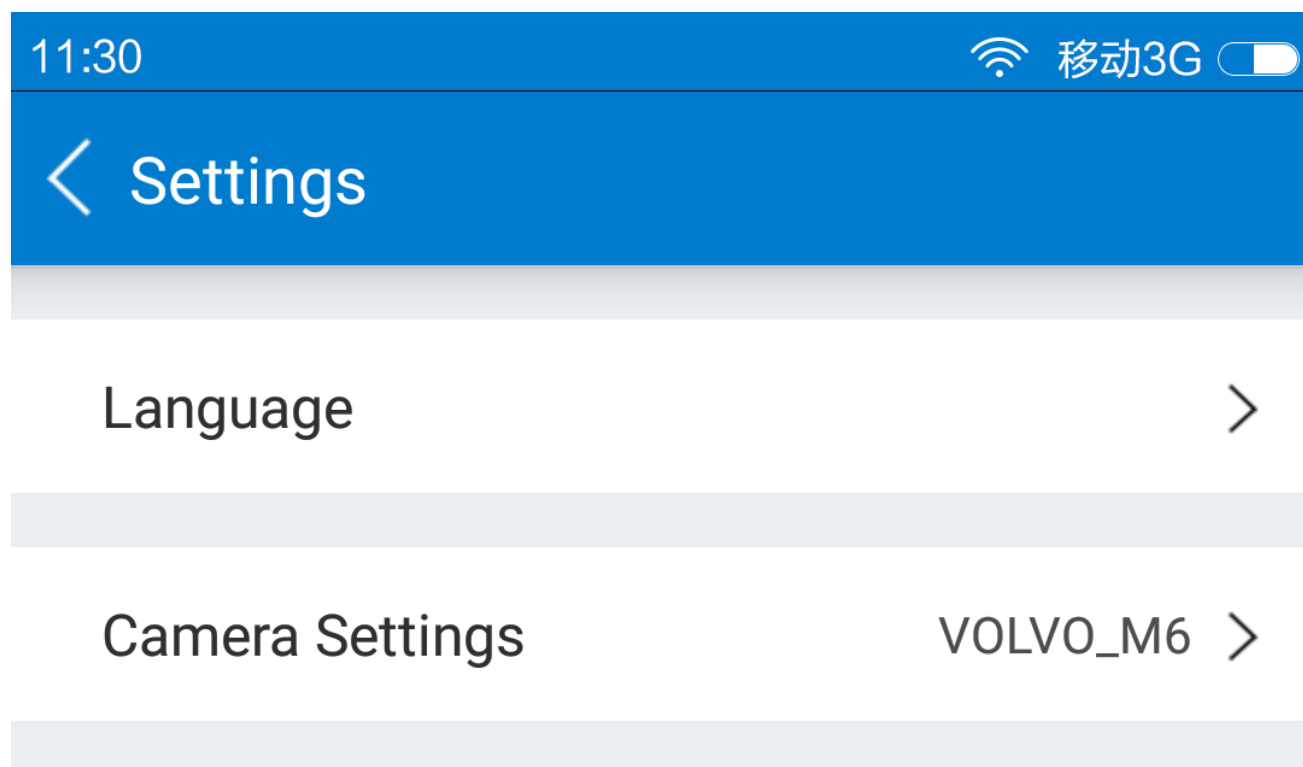


Slipping the progress bar to locate the time frame or watch the thumbnail to select video less than 5 minutes to download to the connected smart device.

3. Photo taking, recording and download

In the interface of real-time viewing, press "Camera" icon can take photo and save to the smart device. Besides, the user can also press the "camera" button on DVR to take photo (but for the sake of safety, it is not recommended for the driver to do this operation during driving), and when "associate video" function is on, the above two operations can record a 10-second video simultaneously. (Note: the photos taken are saved in the TF card of DVR and the user can choose to download to connected smart device manually or automatically)

Setup downloading automatically: enter into "setup" interface and choose "Auto download the captured file", on or off.



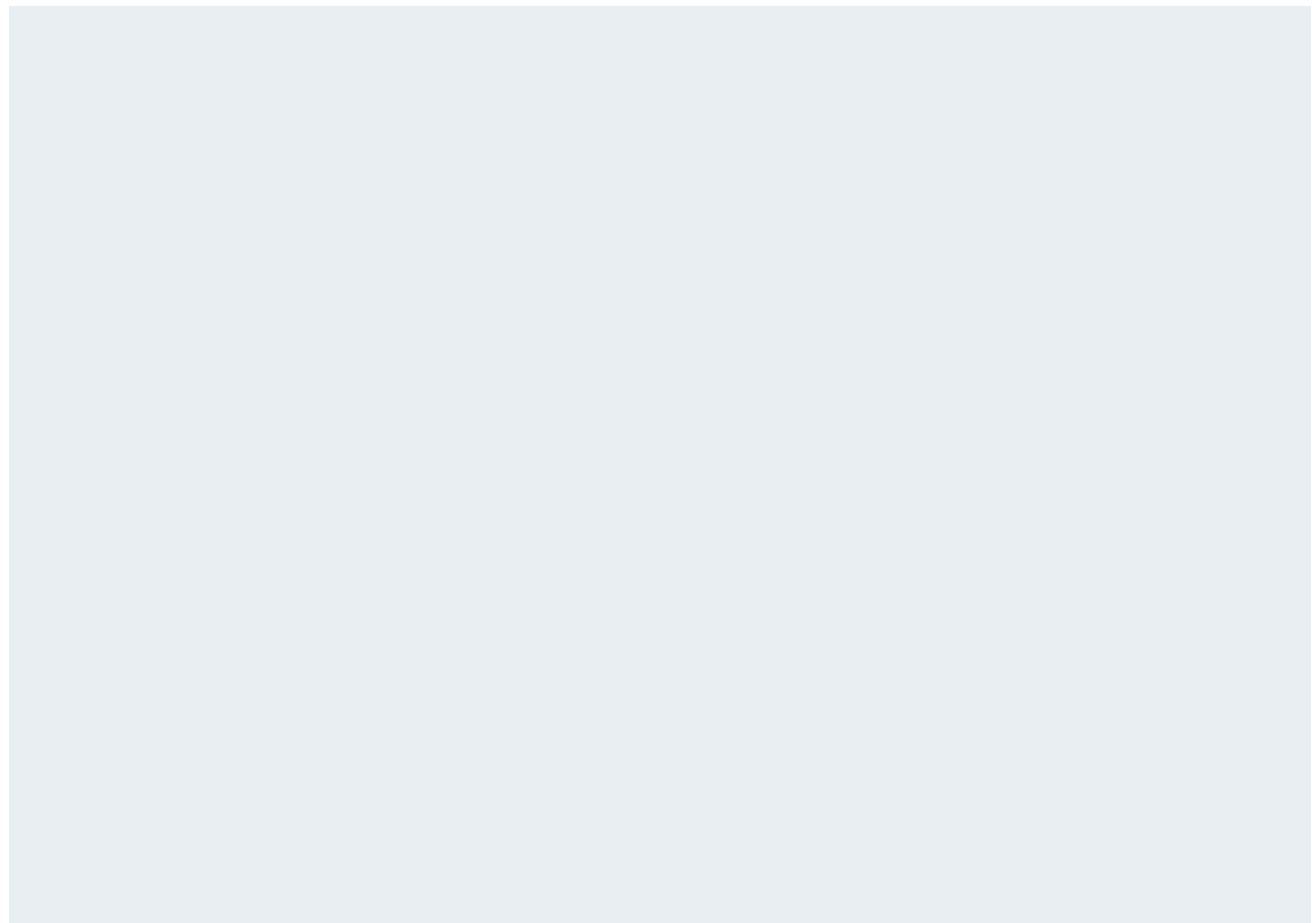
App Storage Management




Auto download the captured file

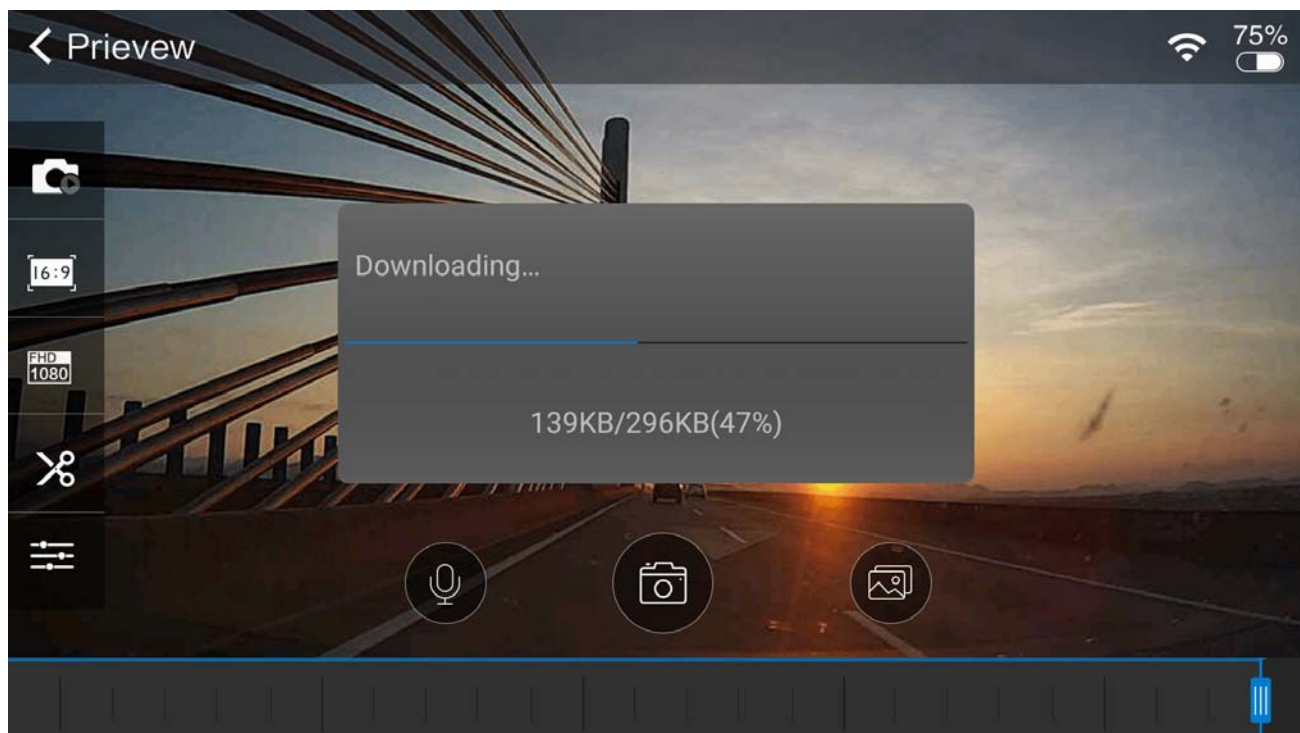



App advanced settings

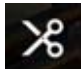


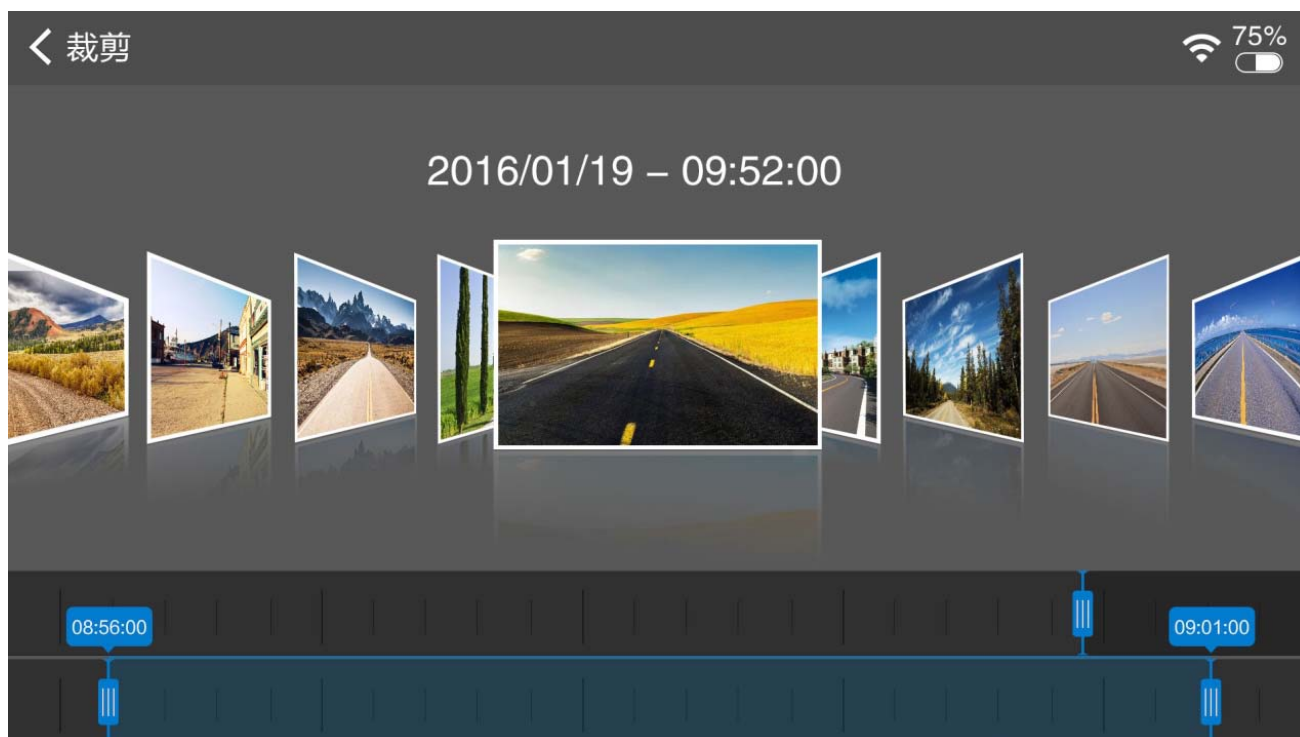
When on is chosen, once connection between DVR and smart device is made, the

Downloading/Pause icon in APP in the will change to Downloading status  and the photos and associate videos will be downloaded into the connected smart device automatically. When downloading finishes, a small-scale snapshot will be shown in the left upper corner of display. And the user can press it to check the downloaded photo or check it in album.



If "Automatically downloading" is off, the Downloading/Pause icon in APP will change to Manual mode . Only this icon is pressed, downloading will happen.



Downloading any video less than 5 minutes: in full screen mode, press  button to enter downloading interface. And the progress bar can be slipped to locate the time frame or watch the thumbnails to select any video less than 5 minutes and download to the connected smart device.

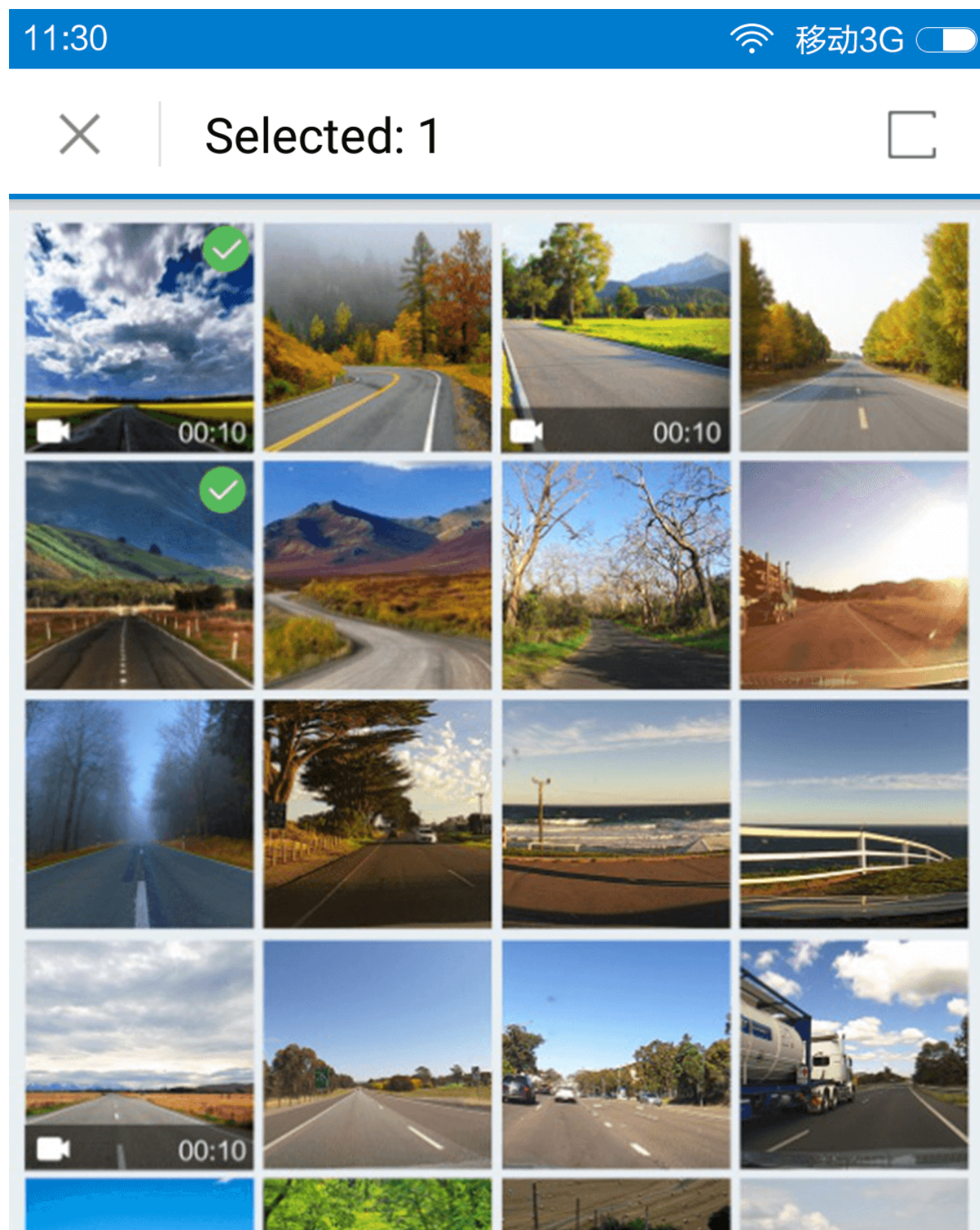


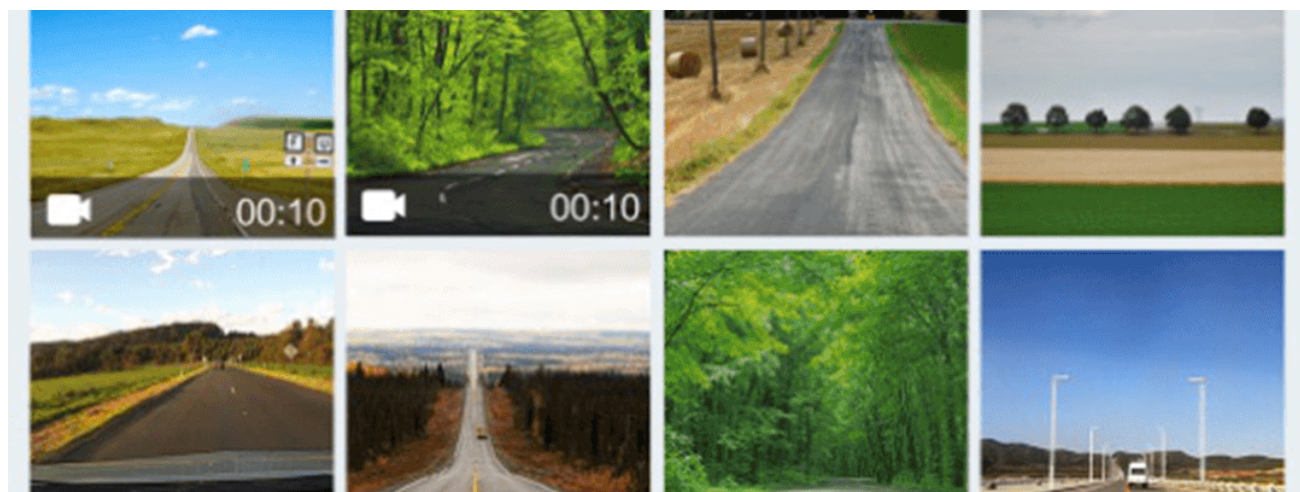
Slip the finger on the progress bar to select the video wanted and then press  icon

to start or  pause downloading.

4. Album management and sharing

Collection: in album listing interface, long pressing one or more photos or videos can add them into collection. When photos or videos selected, press  to collect or press  to delete.





Beautify




Favorite

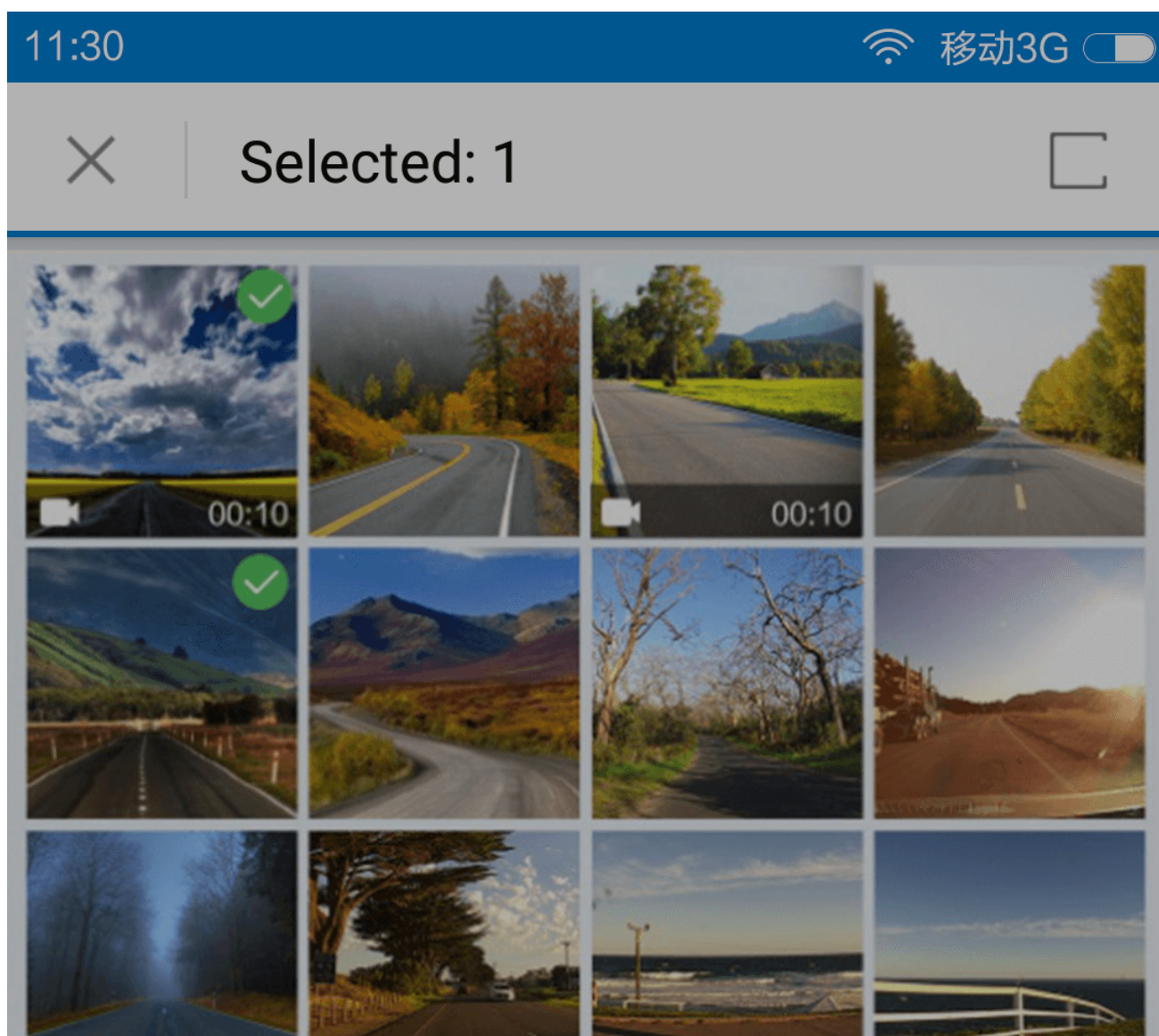


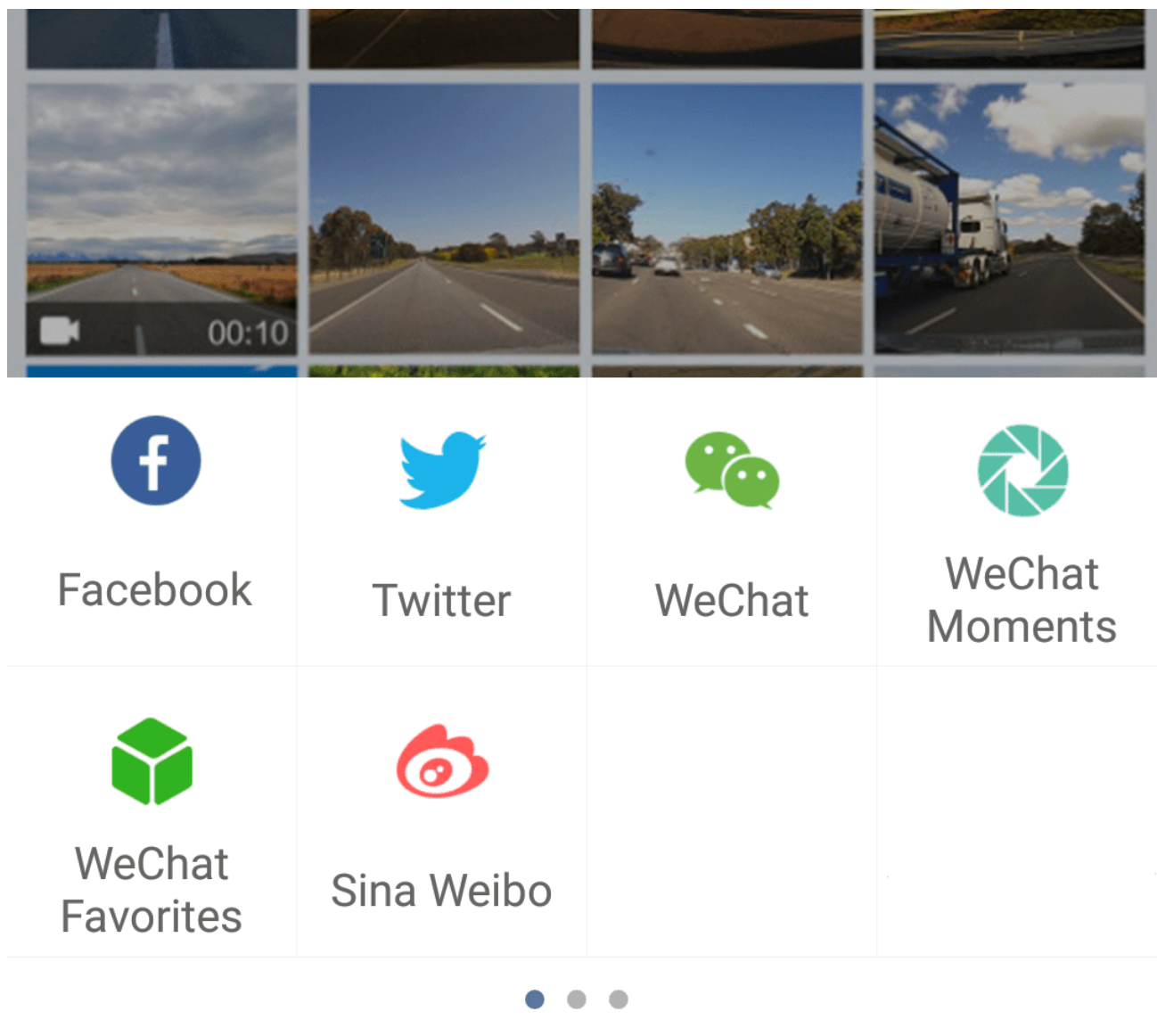
Share



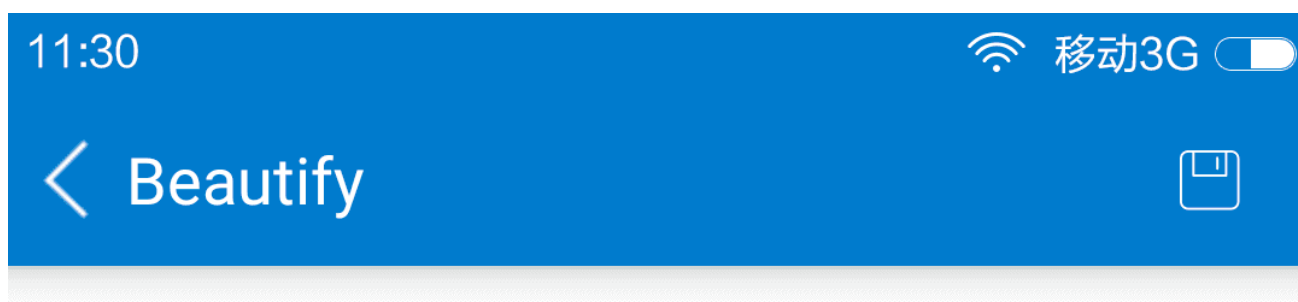
Delete

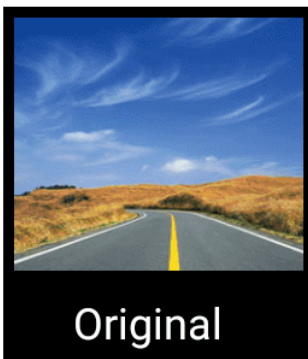
Sharing: Long pressing to select one or more photos, and then press  icon to share them into social media. (All social media APP installed in the smart device will show in the optional area, but part of them may not be used, which depends on developer's releasing schedule.)



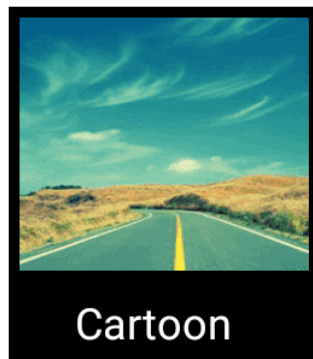


Press  icon to filter the selected picture and produce a beautified picture.

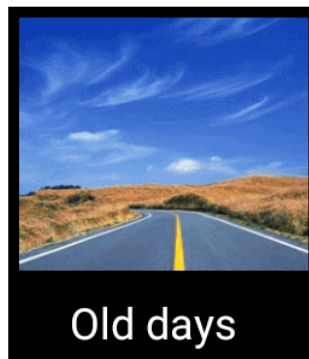




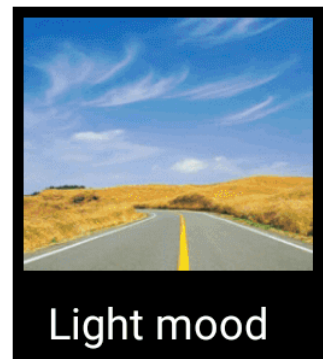
Original



Cartoon



Old days



Light mood



Filter



Crop

5. Setup the camera

Press "Camera Settings" icon and enter into setup interface, the name of camera, pin code of wifi connection and be changed and choosing "binding my camera" to give the smart device the highest authorization as the master user. Once one smart device is authorized as the master user, the other users can't do the binding, unless it does unbinding operation and show no smart device being bind.

11:30

移动3G  

< Camera setting

Camera Name VOLVO_M6 >

Camera Password >

Volume Adjusting 100% >

Video recording with sound 


Capture with video clip 

Image quality level 720P >

Video Mode Blu-ray Cinema mode (2.4:1) >

Advanced settings >

Camera Storage Management >

Camera Info. >

< Settings

Language



Camera Settings

VOLVO_M6 >

App Storage Management



Auto download the captured file



App advanced settings



If you want to check the version information of DVR, press "Camera info." to do it.

11:30

移动3G

< Camera Info.



Version:

v3.3.0.33

Running time:

7 Minute

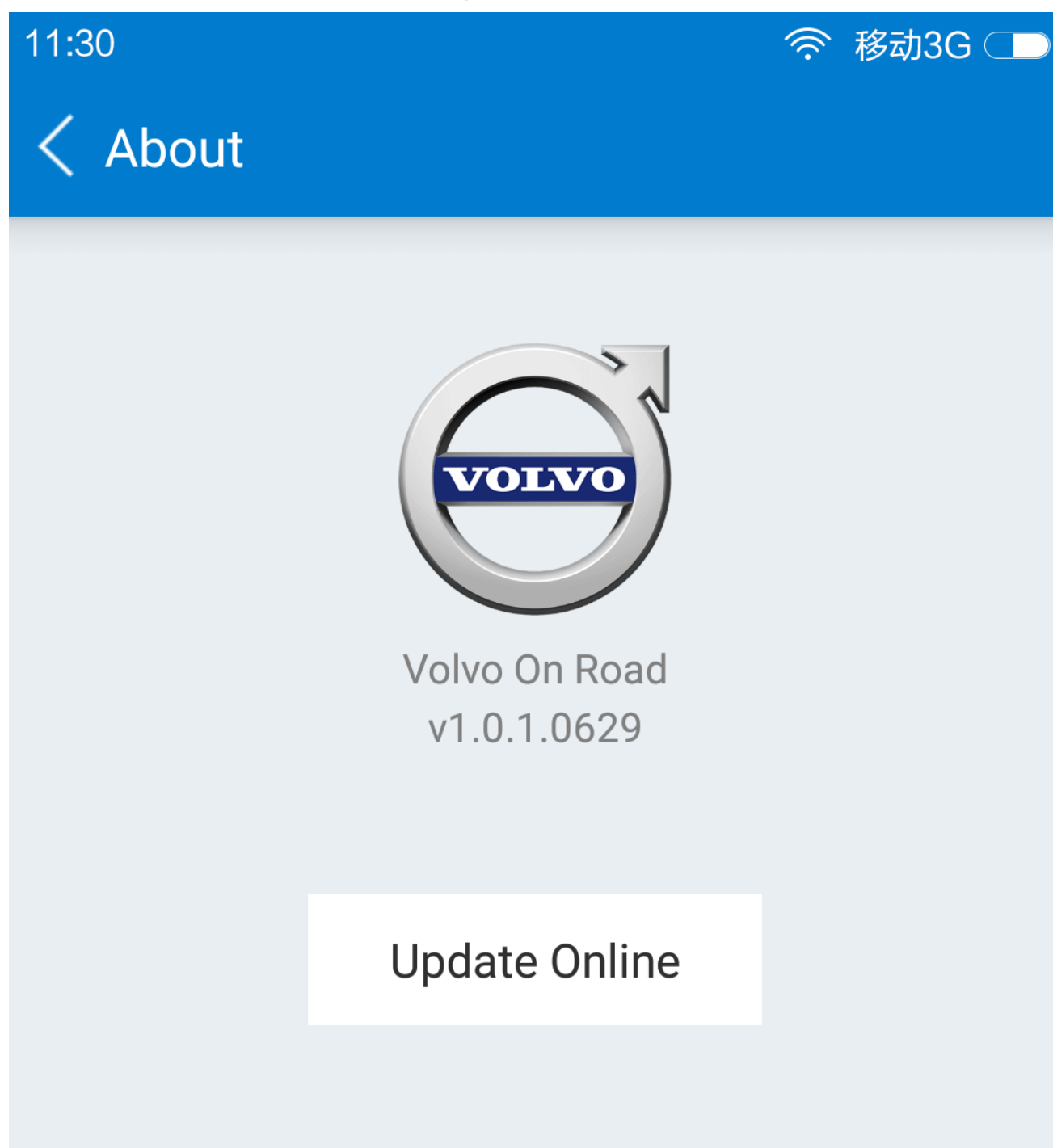


Current login:

OnePlus ONE A2001
8/1/2017 4:40:06 PM

6. APP setup

When entering into APP setup interface, the user can manage storage, change language of APP, choose "Auto download the captured file" on/off etc.

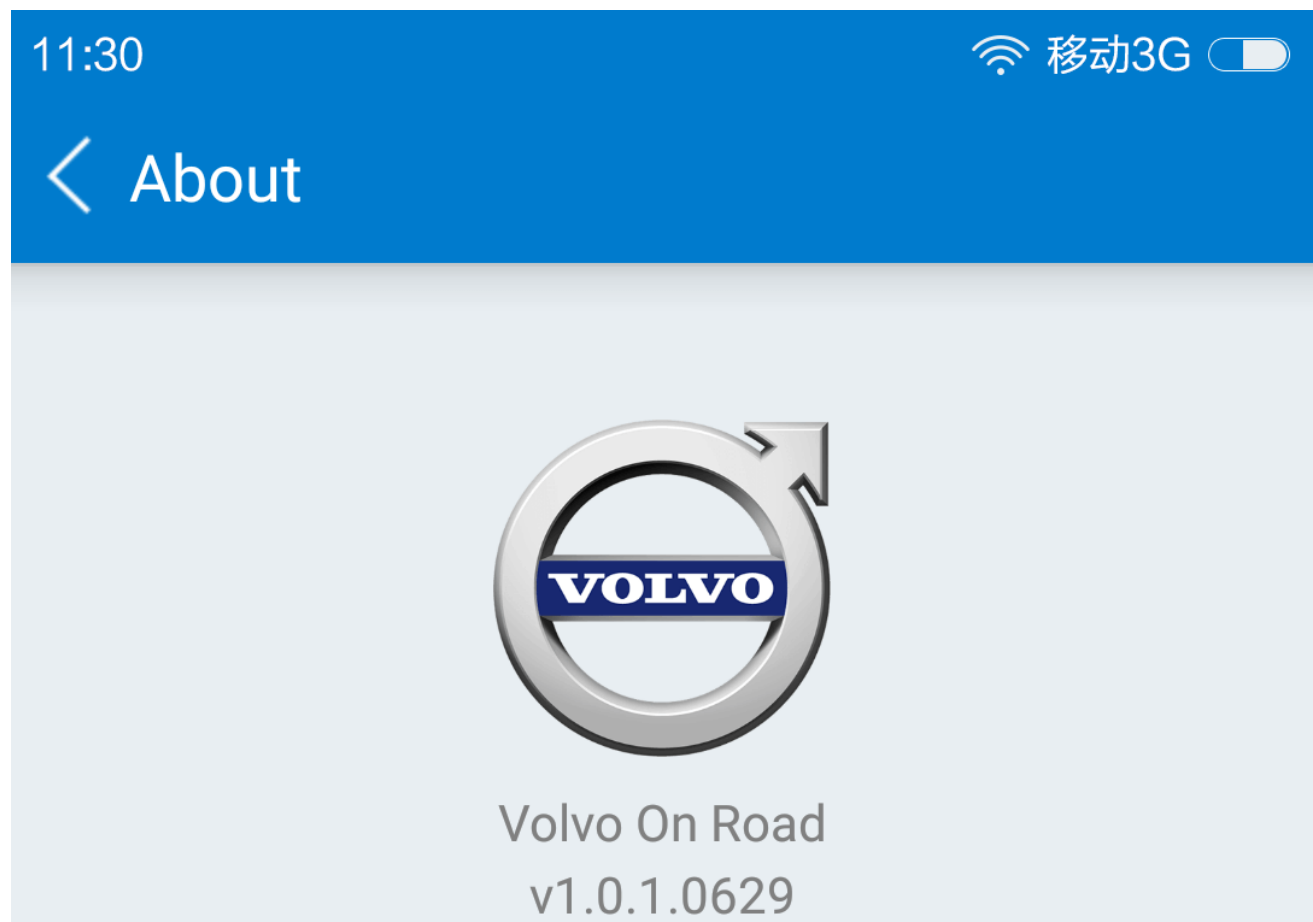


Terms and Privacy

"VOLVO ON ROAD" special for Volvo car company developed by Peksun(Beijing) Automotive Technology Co., Ltd . DDPai Technology support , Copyright Peksun(Beijing) Automotive Technology Co., Ltd.

4.2 Version information of APP and OS upgrading

Entering into "About" interface, the user can check the copyright and version information of Volvo On Road, and automatically detect the latest APP version and upgrade camera software and APP software as well automatically on line.



Update Online

[Terms and Privacy](#)

"VOLVO ON ROAD" special for Volvo car company developed by
Peksun(Beijing) Automotive Technology Co., Ltd . DDPai
Technology support , Copyright Peksun(Beijing) Automotive
Technology Co., Ltd.

4.2.6.2 Help

There is HELP interface where the user can check Q&A and User Manual of Volvo On Road itself.

(End)